

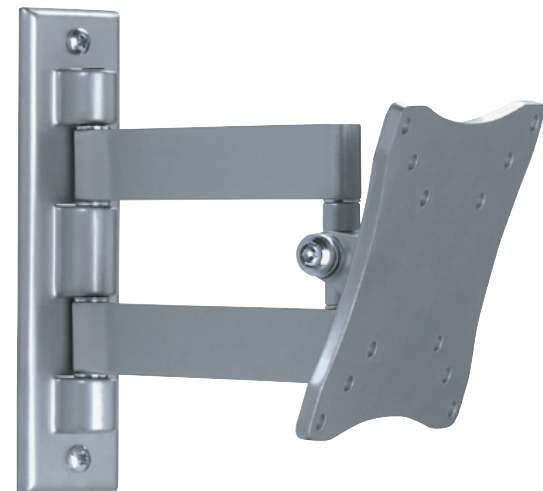
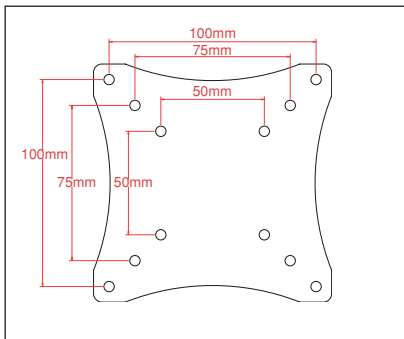
QUIKLOK[®]

[audio/video equipment stands]

14

QUIK-LOK'S LINE OF WALL-MOUNTING SYSTEMS FOR LCD/PLASMA TV'S & PROJECTORS

- Quik-Lok offers a full line of wall mounts for flat-panel LCD/Plasma TV's and monitors, for high standard audio/video integration, home theater entertainment and commercial A/V applications.



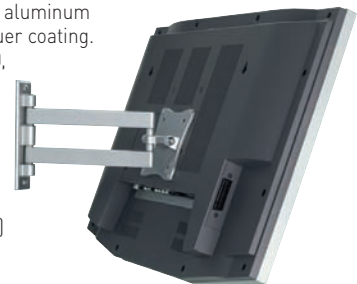
WM/100

- Designed for flat screens, LCD displays & video monitors with VESA mounting requirements.
- Features a double-joint, tension-adjustable, precision-fit arm that controls wall depth extension.
- Mounting plate features up-and-down tilt adjustments (+/- 45°) and side-to-side angle adjustments (+/- 180°)
- Maximum depth extension of 2.9" (73 mm) from wall
- All adjustments can be precisely locked into place once desired positions are set.
- Weight capacity of 44,5 lb. (20 kg) when mounted directly to wall studs.
- Video and power cables can be easily snaked through mount without restricting adjustment.
- Manufactured using high-strength, die-cast aluminum finished with a scratch-resistant, hard lacquer coating.
- Mounting plate is fully compliant with VESA 50, 75 & 100 mm bolt pattern standards.
- Includes all hardware and instructions for fast and simple installation.
- WMA/103 optional adapter plate is required to mount flat screens built to VESA 100x100 and 100x200 mm standards
- Available in Titanium Grey (code **WM/100 TI**) or Black finish (code **WM/100 BK**)



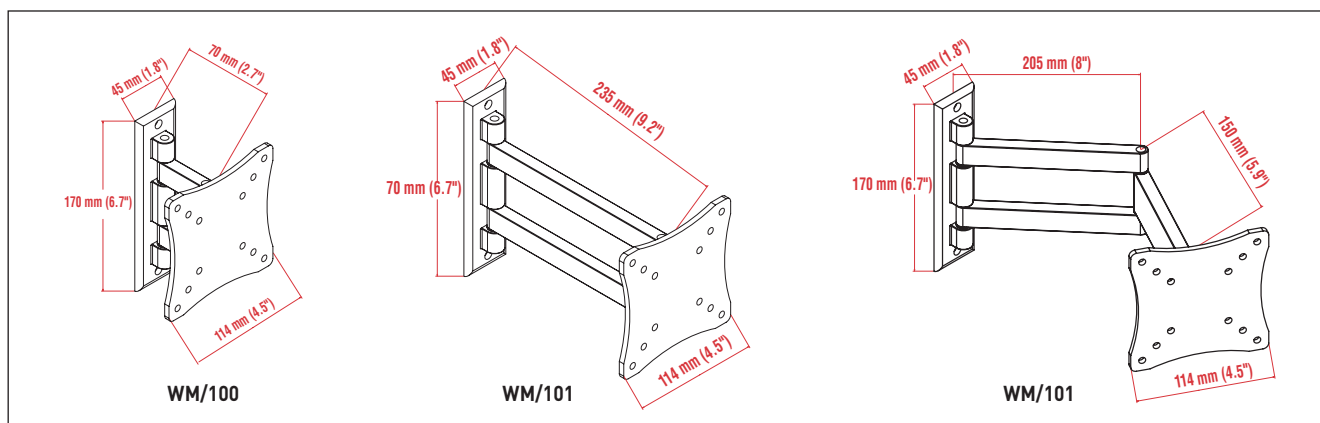
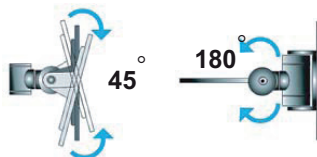
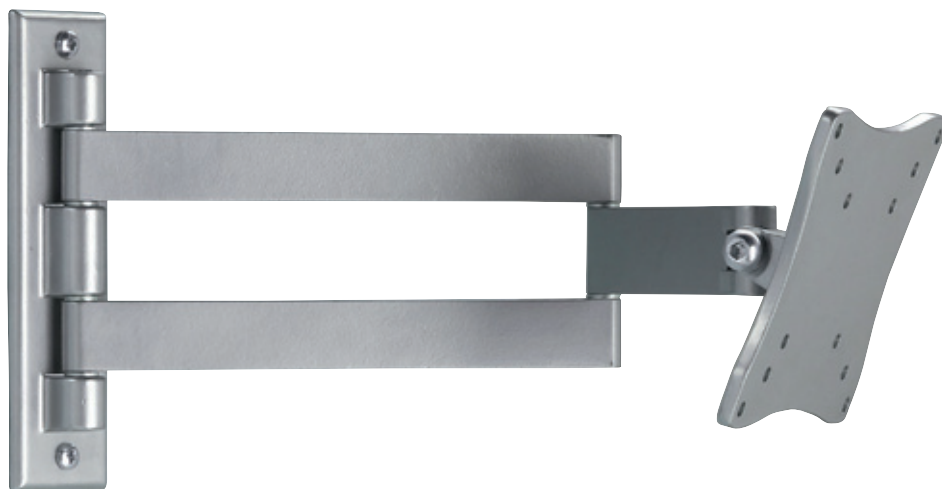
WM/101

- Designed for flat screens, LCD displays & video monitors with VESA mounting requirements.
- Features a double-joint, tension-adjustable, precision-fit arm that controls wall depth extension.
- Mounting plate features up-and-down tilt adjustments (+/- 45°) and side-to-side angle adjustments (+/- 180°).
- Maximum depth extension of 9.4" (238 mm) from wall.
- All adjustments can be precisely locked into place once desired positions are set.
- Weight capacity of 44,5 lb. (20 kg) when mounted directly to wall studs.
- Video and power cables can be easily snaked through mount without restricting adjustment.
- Manufactured using high-strength, die-cast aluminum finished with a scratch-resistant, hard lacquer coating.
- Mounting plate is fully compliant with VESA 50, 75 & 100 mm bolt pattern standards.
- Includes all hardware and instructions for fast and simple installation.
- WMA/103 optional adapter plate is required to mount flat screens built to VESA 100x100 and 100x200 mm standards
- Available in Titanium Grey (code **WM/101 TI**) or Black finish (code **WM/101 BK**)



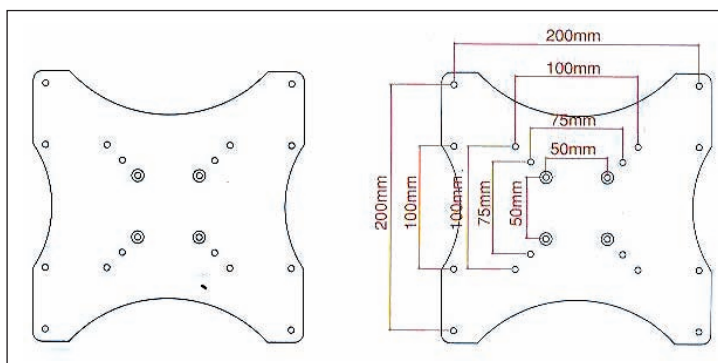
WM/102

- Designed for flat screens, LCD displays & video monitors with VESA mounting requirements.
- Features a triple-joint, tension-adjustable, precision-fit arm that controls wall depth extension.
- Mounting plate features up-and-down tilt adjustments (+/- 45°) and side-to-side angle adjustments (+/- 180°).
- Maximum depth extension of 14" (355 mm) from wall.
- All adjustments can be precisely locked into place once desired positions are set.
- Weight capacity of 44,5 lb. (20 kg) when mounted directly to wall studs.
- Video and power cables can be easily snaked through mount without restricting adjustment.
- Manufactured using high-strength, die-cast aluminum finished with a scratch-resistant, hard lacquer coating.
- Mounting plate is fully compliant with VESA 50, 75 & 100 mm bolt pattern standards.
- Includes all hardware and instructions for fast and simple installation.
- WMA/103 optional adapter plate is required to mount flat screens built to VESA 100x100 and 100x200 mm standards
- Available in Titanium Grey (code **WM/102 TI**) or Black finish (code **WM/102 BK**)



WMA/103

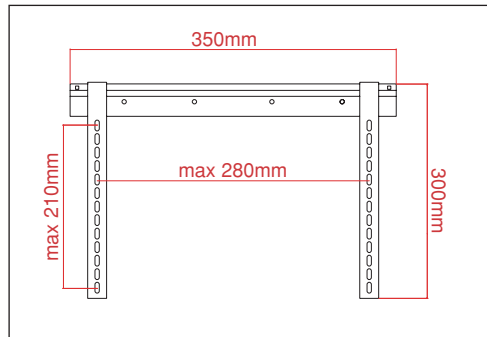
- Optional adapter plate for use with brackets model WM/100, WM/101 and WM/102. Complies with VESA 100x100 and 100x200 mm mounting standards
- Available in Titanium Grey (code **WMA/103 TI**) or Black finish (code **WMA/103 BK**)





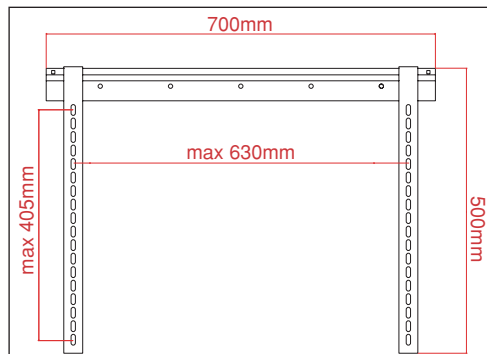
WM/140

- Low profile universal wall mount for flat screens from 23" to 42" wide.
- Low profile design allows for any flat screen to be mounted only 10 mm (0.4") from wall, thus creating a picture frame effect.
- Perfect for applications where limited space is available or as part of a design element that requires a wall mounted flat screen.
- Weight Capacity of 165 lb. (75 kg) when mounted directly to wall studs.
- Designed to prevent flat screen from being knocked off the wall mount by accident.
- Heavy-gauge, alloy steel construction finished with a scratch-resistant, hard lacquer coating.
- Includes all hardware and instructions for fast and simple installation
- Available in Titanium Grey (code **WM/140 TI**) or Black finish (code **WM/140 BK**)



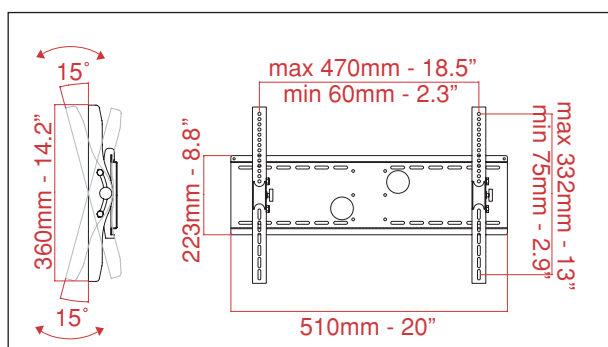
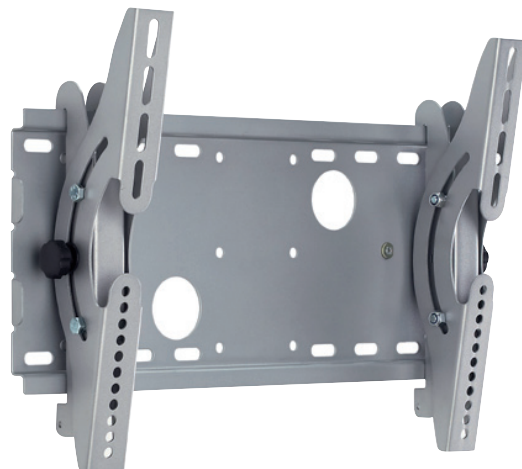
WM/141

- Low profile universal wall mount for flat screens from 30" to 63" wide.
- Low profile design allows for any flat screen to be mounted only 10 mm (0.4") from wall, thus creating a picture frame effect.
- Perfect for applications where limited space is available or as part of a design element that requires a wall mounted flat screen.
- Weight Capacity of 165 lb. (75 kg) when mounted directly to wall studs.
- Designed to prevent flat screen from being knocked off the wall mount by accident.
- Heavy-gauge, alloy steel construction finished with a scratch-resistant, hard lacquer coating.
- Includes all hardware and instructions for fast and simple installation.
- Available in Titanium Grey (code **WM/141 TI**) or Black finish (code **WM/141 BK**)



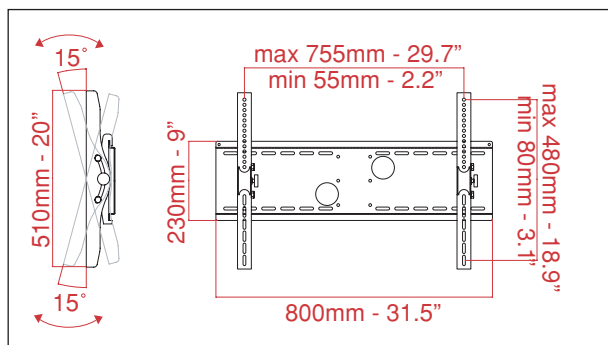
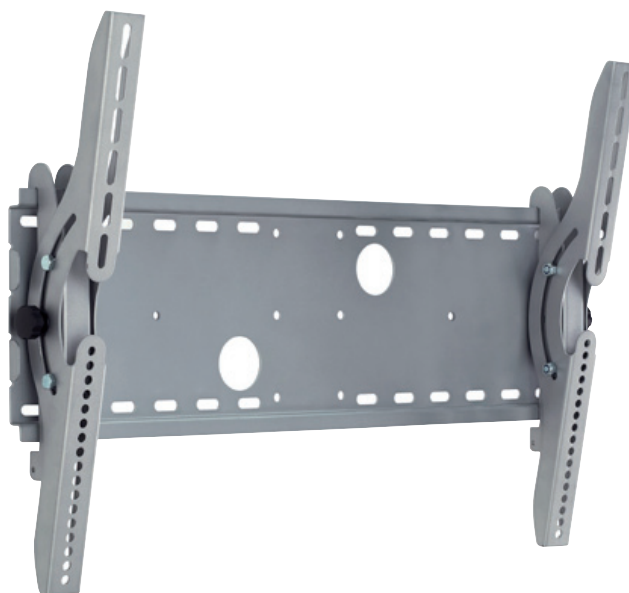
WM/120

- Designed to securely attach flat screens from 23" to 42" wide to any flat wall.
- Perfect for applications where limited space is available or as part of a design element that requires a wall mounted flat screen.
- Up-and-down tilt adjustment of (+/-)15° that is lockable once desired angle is set.
- Weight Capacity of 165 lb. (75 kg) when mounted directly to wall studs.
- Designed to prevent flat screen from being knocked off the wall mount by accident.
- Heavy-gauge, alloy steel construction finished with a scratch-resistant, hard lacquer coating.
- Includes all hardware and instructions for fast and simple installation
- Available in Titanium Grey (code **WM/120 TI**) or Black finish (code **WM/120 BK**)



WM/121

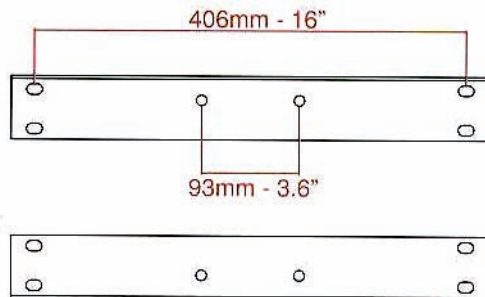
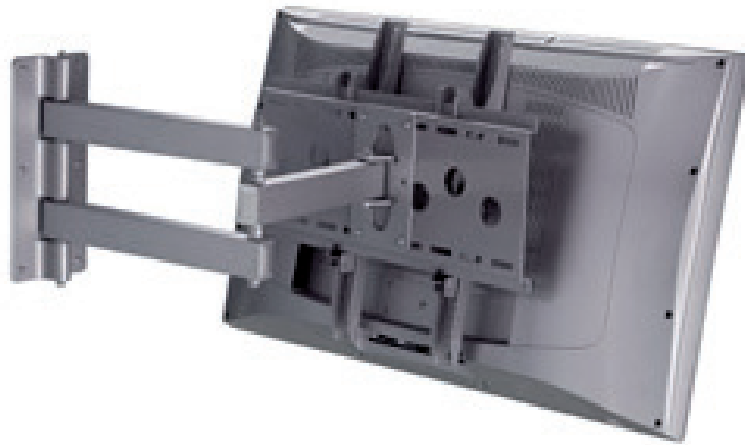
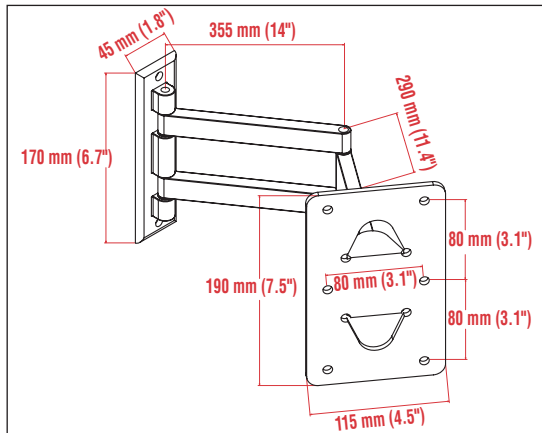
- Designed to securely attach flat screens from 30" to 63" wide to any flat wall.
- Perfect for applications where limited space is available or as part of a design element that requires a wall mounted flat screen.
- Up-and-down tilt adjustment of (+/-)15° that is lockable once desired angle is set.
- Weight Capacity of 165 lb. (75 kg) when mounted directly to wall studs.
- Designed to prevent flat screen from being knocked off the wall mount by accident.
- Heavy-gauge, alloy steel construction finished with a scratch-resistant, hard lacquer coating.
- Includes all hardware and instructions for fast and simple installation
- Available in Titanium Grey (code **WM/121 TI**) or Black finish (code **WM/121 BK**)





WM/130

- Designed for flat screens 23" to 42" wide (when used with #WM-120) or from 30" to 63" wide (when used with #WM-121).
- Can be used only in combination with WM/120 or WM/121 brackets.
- Operational weight capacity of up to 165 lb. (75 kg) when mounted directly to wall studs.
- Precision-fit, triple-joint arm design provides smooth depth adjustment from wall.
- Swiveling mounting plate allows side-to-side angle adjustments of (+/-) 180°.
- Video and power cables can be easily snaked through the mount without restricting adjustment.
- Manufactured using high-strength, steel tubing finished in a beautifully textured, scratch-resistant, hard lacquer coating.
- Includes all hardware and instructions for fast and simple installation.
- Available in Titanium Grey (code **WM/130 TI**) or Black finish (code **WM/130 BK**)



WMA/132

- Stud adapter set suitable for WM/130 bracket.
- Recommended when particularly heavy loads require fixing the WM/130 to two wall studs.
- Available in Titanium Grey (code **WMA/132 TI**) or Black finish (code **WMA/132 BK**)

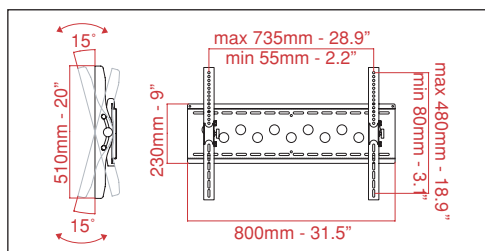
DSP/190 FREE-STANDING FLAT-SCREEN MOUNTING SYSTEM



DSP/190 TI

- With a blend of style and functionality, the DSP/190 TI combines a universal flat screen mounting system with a durable, portable base that is perfect for commercial use
- Ideal solution for broadcasting, presentations, conference rooms, trade shows, hospitality centers, hotel lobbies, airports, shopping malls, rentals, staging, etc.
- Capable of supporting any 30" to 52" wide flat screen, weighing up to 178 lb. (80 kg)
- The versatile, universal mounting system can be positioned at ten different height positions, ranging from 195 to 234 cm (76.8" to 92.1"), with a tilt angle adjustment of (+/-)15° for optimum viewing
- Designed with a sturdy four-legged base, equipped with heavy-duty, steel casters (two locking) for easy mobility
- An optional clear, tempered glass center shelf is available as an add-on to accommodate audio/video components (model #DSPA-01 TI)
- The support column, manufactured using high-strength alloy steel, features cable conduits to hide A/C power cords, speaker wires, and audio/video cables from view, creating a much neater and elegant appearance
- Available in Titanium Grey

Overall dimensions (WxHxD): 39.8" x 76.8" x 23.6"
1010 x 1950 x 600 mm



DSPA/01 TI

- Designed for use with the DSP/190 TI portable floor stand to accommodate various audio/video components
- Made of clear, tempered, safety glass, supported by a heavy-duty steel bracket that attaches easily to center of stand column
- Available in Titanium Grey



WM/150 TI VIDEO PROJECTOR CEILING MOUNT

WM/150 TI

- Heavy-duty, extruded aluminum construction designed to hold most top mounted video projectors, weighing up to 10 kg (22 lb.).
- Unique design is both esthetically attractive and highly functional allowing it to fit all types of commercial and residential applications.
- Offers the choice of using either one of two height extension sleeves supplied, one 80mm (3.1") long and the other 150mm (5.9").
- The projector mount rotates a full 360° and features a tilt angle adjustment of (+/-)15°.
- Three adjustable arms independently move and slide to perfectly match the bolt pattern of projector for easy installation.
- All adjustments can be locked once the proper view angles are set.
- Quick release locking pins allow projector to be easily removed from mount for adjustment, storage or servicing.
- Available in Titanium gray.

